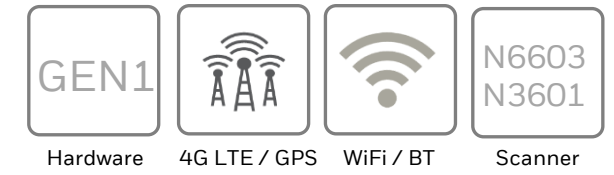
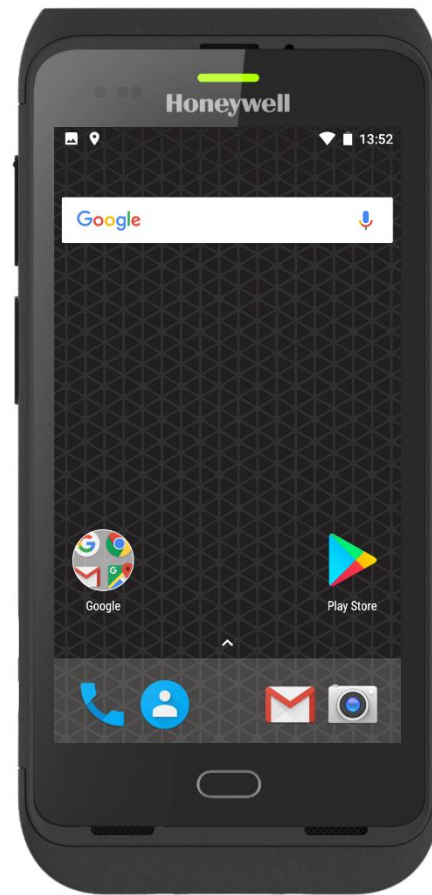


Dolphin CT40 Computer - Configuration Guide



- Included in the box:
- CT40 Mobile Computer
 - Gen 1 Battery (318-055-010)
 - Hand strap

(Stylus is not included, but available to order separately as an accessory)



CT40 Android - 4G WWAN – N6603 – 4GB RAM/ 32GB Flash

CT40-L1N-2SC110x CT40, Android, WWAN, 802.11 a/b/g/n/ac/r/k/mc, 1D/2D Imager SR (N6603), 4GB/32GB Memory, 13MP Camera, BT 5.0, NFC, Gen 1 Battery 4,090 mAh (318-055-010)

CT40 Android - 4G WWAN – N3601 – 2GB RAM/ 32GB Flash

CT40-L1N-1NC110x CT40, Android, WWAN, 802.11 a/b/g/n/ac/r/k/mc, 1D/2D Imager SR (N3601), 2GB/32GB Memory, 13MP Camera, BT 5.0, NFC, Gen 1 Battery 4,090 mAh (318-055-010)

CT40 Android – WiFi Only – N6603 – 4GB RAM/ 32GB Flash

CT40-L0N-2SC110x CT40, Android, WLAN, 802.11 a/b/g/n/ac/r/k/mc, 1D/2D Imager SR (N6603), 4GB/32GB Memory, 13MP Camera, BT 5.0, NFC, Gen 1 Battery 4,090 mAh (318-055-010)

CT40 Android – WiFi Only – N3601 – 2GB RAM/ 32GB Flash

CT40-L0N-1NC110x CT40, Android, WLAN, 802.11 a/b/g/n/ac/r/k/mc, 1D/2D Imager SR (N3601), 2GB/32GB Memory, 13MP Camera, BT 5.0, NFC, Gen 1 Battery 4,090 mAh (318-055-010)

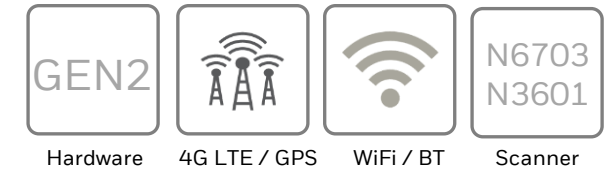
(Note: x = Domain, select appropriate Domain from Configuration Map on page 3)

Honeywell Repair Services

SVCCT40-5FC3

CT40, PLUS, 5 Day Turnaround, 3 Year, Day One

Dolphin CT40 Computer - Configuration Guide



- Included in the box:
- CT40 Mobile Computer
 - Gen 2 Battery (318-055-014)
 - Hand strap

(Stylus is not included, but available to order separately as an accessory)



New Metal Battery Latch



3.5mm Audio Jack
(WiFi Models Only CT40-LON-xxxxxAx)



N3601



N6703

CT40 Android - 4G WWAN - N6703 - 4GB RAM/ 32GB Flash

CT40-L1N-27C11Bx CT40, Android 8.1.0, WWAN, 802.11 a/b/g/n/ac/r/k/mc, 1D/2D Imager SR (N6703), 4GB/32GB Memory, 13MP Camera, BT 5.0, NFC, Gen 2 Battery 4,090 mAh (318-055-014)

CT40 Android - 4G WWAN - N3601 - 2GB RAM/ 32GB Flash

CT40-L1N-1NC11Bx CT40, Android 8.1.0, WWAN, 802.11 a/b/g/n/ac/r/k/mc, 1D/2D Imager SR (N3601), 2GB/32GB Memory, 13MP Camera, BT 5.0, NFC, Gen 2 Battery 4,090 mAh (318-055-014)

CT40 Android - WiFi Only - N6703 - 4GB RAM/ 32GB Flash

CT40-LON-27C11Ax CT40, Android 8.1.0, WLAN, 802.11 a/b/g/n/ac/r/k/mc, 1D/2D Imager SR (N6703), 4GB/32GB Memory, 13MP Camera, BT 5.0, NFC Gen 2 Battery 4,090 mAh (318-055-014), 3.5mm Audio Jack (Does not include headset, order CT40-HDST-35MM separately)

CT40 Android - WiFi Only - N3601 - 2GB RAM/ 32GB Flash

CT40-LON-1NC11Ax CT40, Android 8.1.0, WWAN, 802.11 a/b/g/n/ac/r/k/mc, 1D/2D Imager SR (N3601), 2GB/32GB Memory, 13MP Camera, BT 5.0, NFC, Gen 2 Battery 4,090 mAh (318-055-014) 3.5mm Audio Jack (Does not include headset, order CT40-HDST-35MM separately)



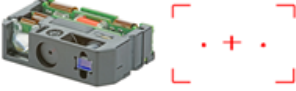
(Note: x = Domain, select appropriate Domain from Configuration Map on page 3)

Honeywell Repair Services

SVCCT40-5FC3

CT40, PLUS, 5 Day Turnaround, 3 Year, Day One

Dolphin CT40 Configuration Map

Bluetooth/ WiFi	WWAN	NFC	—	Memory	Imager	Camera	Operating System	Application	Options	Domain	Description	Notes
CT40-												
L											802.11 a/b/g/n/ac/r/k/mc + Bluetooth 5.0	IEEE 802.11 a/b/g/n/ac; Wi-Fi certified V5.0 Bluetooth and BLE Supported Bluetooth Profiles: HFP, PBAP, A2DP, AVRCP, OPP, SPP, GATT
	1										LTE (4G) GPS, UMTS/HSPA+ (3G) GSM/GPRS/EDGE	WWAN Radio (ATT/VZW/SPRINT/TMO/NA/EU) LTE (FDD) – Bands 1,2,3,4,5,7,8,12,13,17,19,20,25,26,28,29 LTE (TDD) – Bands 38,39,40,41 UMTS/HSPA+ (3G) – Bands 1, 2, 4, 5, 6, 8, 9, 19 GSM/GPRS/EDGE Quad-Band (850/900/1800/1900 MHz)
	0										No WWAN	
		N									Near Field Communication (NFC)	Integrated Near Field Communication
			—									
				1							2GB RAM/32GB Flash Memory	2.2 GHz Qualcomm Snapdragon™ 660 octa-core
				2							4GB RAM/32GB Flash Memory	2.2 GHz Qualcomm Snapdragon™ 660 octa-core
					N						1D/2D Imager (N3601)	
					S						1D/2D Imager (N6603)	
					7						1D/2D Imager (N6703) – Standard Range	
						C					13MP Camera	13-megapixel color camera auto focus with flash (rear), 4K video with image stabilization, and advanced software features for enhanced exposure control
							1				Android (GMS)	Google Mobile Services (GMS) certified – Play Store
								1			Standard Software Build	
									0		Standard – Gen I Battery Latch	
									A		Audio Jack – New Gen II Battery Latch	3.5mm Audio Jack - supports PTT, VOIP – Only available on WiFi Only models (CT40-LO-xxxxxxx)
									B		No Audio Jack – New Gen II Battery Latch	
										A	ANZ & Arg	Argentina, Australia, New Zealand
										E	World Wide	Brazil, China, Columbia, Dominican Republic, Hong Kong, Japan, Jordan, Kuwait, Morocco, Oman, Qatar, Russia, Saudi Arabia, Singapore, South Africa, South Korea, Sri Lanka, Switzerland, Thailand, UAE, Ukraine, Vietnam
										F	FCC	USA, Canada, Guatemala, Mexico, Panama, Paraguay, Puerto Rico, Taiwan, Venezuela
										G	European Economic Area	Austria, Belgium, Bulgaria, Croatia, Cyprus, Czech Republic, Denmark, Estonia, Finland, France, Germany, Greece, Iceland, Ireland, Italy, Latvia, Liechtenstein, Lithuania, Luxembourg, Malta, Netherlands, Norway, Poland, Portugal, Romania, Slovakia, Slovenia, Spain, Sweden, United Kingdom
										M	Miscellaneous 2.4GHz	Egypt, Honduras, India, Indonesia, Malaysia



Honeywell Repair Services

CT40 – Repair Services

For Best-In-Class Service

With Honeywell Repair Services, it’s easy to get the level of repair coverage and protection that makes the most sense for your business. And our repair services are now available in over 70 countries with global pricing and global standards of quality.

Choose from one of our new cost-effective Repair Service contract programs – Complete, Plus or Basic – to get the right amount of coverage and protection you need for your durable, rugged and ultra-rugged products. And for equipment not covered by a contract service plan, you can choose from our Non-Contract Repair Service offerings, which include flat-rate repairs, time-and-materials repairs and more.

Ensure business continuity, workflow performance and protection of your technology investments with Honeywell Repair Services.

Plus Repair Services

Protect your technology investment! With Honeywell’s 3 and 5 year Plus comprehensive repair services plan, you won’t incur any additional costs beyond the plan enrollment for service on covered devices and eligible accessories included with equipment sent to the depot for service. Eligible accessories include damaged styluses, battery-door covers, screen protectors, hand straps and clips.

Service Overview

- Features and benefits include:
 - Comprehensive coverage – including device replacement for rugged or stationary products
 - Day One multi-year pricing for lower annualized costs
 - Three years of locked-in service-price protection, with optional renewals
 - Options for 2-day and 5-day service levels
 - Cleaning and preventive maintenance
 - Telephone-based technical support
 - Convenient online Return Authorization requests and access to online service-history reports

Complete Repair Services

The only contract you will ever need! With Honeywell’s 3 and 5 year Complete comprehensive repair services plan, one contract covers it all – device, power management and accessories. Eligible accessories and power management for mobile computers include: batteries, docks, chargers, cradles, cables, damaged styluses, battery-door covers, screen protectors, hand straps and clips.

Service Overview

- Features and benefits include:
 - Comprehensive coverage – including device replacement for rugged or stationary products
 - Coverage for power management and select accessories
 - Day One multi-year pricing for lower annualized costs
 - Five years of locked-in service-price protection
 - Options for overnight and 2-day or 5-day service levels
 - Cleaning and preventive maintenance
 - Telephone-based technical support
 - Convenient online Return Authorization requests and access to online service-history reports

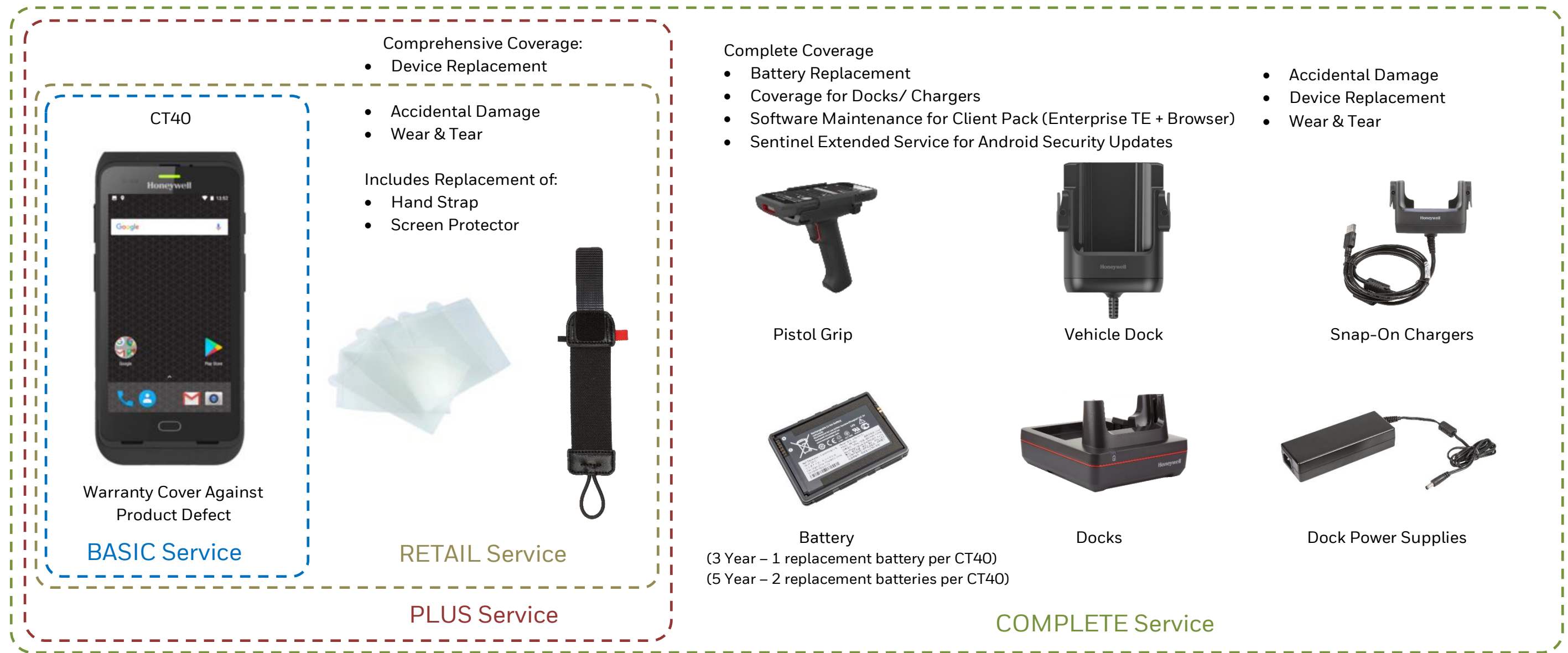
Part Number	Description
SVCCT40-5FC3	CT40, PLUS, 5 Day Turnaround, 3 Year Day One
SVCCT40WWAN-5FC3	CT40, PLUS, WWAN ONLY 5 Day Turnaround, 3 Year, Day One
SVCCT40-2FC3	CT40, PLUS, 2 Day Turnaround, 3 Year, Day One
SVCCT40WWAN-2FC3	CT40, PLUS, WWAN ONLY 2 Day Turnaround, 3 Year, Day One

Part Number	Description
SVCCT40-5PS3	CT40, COMPLETE, 5 Day Turnaround, 3 Year, Day One Includes Power Management Protection, Browser Maintenance, Battery Refresh (APAC Only)
SVCCT40-2PS5	CT40, COMPLETE, 2 Day Turnaround, 5 Year, Day One Includes Power Management Protection, Browser Maintenance, Battery Refresh

Honeywell Repair Services

CT40 – Repair Services

For Best-In-Class Service



CT40 WiFi Only Devices

Part Number	Description
SVCCT40-EXW3	CT40, BASIC, 10-15 Day Turnaround, 2 Years (1 Year Factory Warranty + 2 Year Extended)
SVCCT40-5RC3	CT40, RETAIL, 5 Day Depot, Comprehensive Repairs are included but does not include Device Replacement, 3 Year. WWAN enabled devices are not eligible for this service.
SVCCT40-5FC3	CT40, PLUS, 5 Day Turnaround, 3 Year, Day One
SVCCT40-5PS3	CT40, COMPLETE, 5 Day Turnaround, 3 Year Day One, Includes Power Management Protection, Accessory Coverage and Software Maintenance for Client Pack.

CT40 4G WWAN Devices

Part Number	Description
SVCCT40WWAN-EXW3	CT40, BASIC, WWAN ONLY 10-15 Day Turnaround, 2 Years (1 Year Factory Warranty + 2 Year Extended)
SVCCT40WWAN-5FC3	CT40, PLUS, WWAN ONLY 5 Day Turnaround, 3 Year, Day One
SVCCT40-5PS3	CT40, COMPLETE, 5 Day Turnaround, 3 Year Day One, Includes Power Management Protection, Accessory Coverage and Software Maintenance for Client Pack

Honeywell Repair Services

CT40 – Repair Services

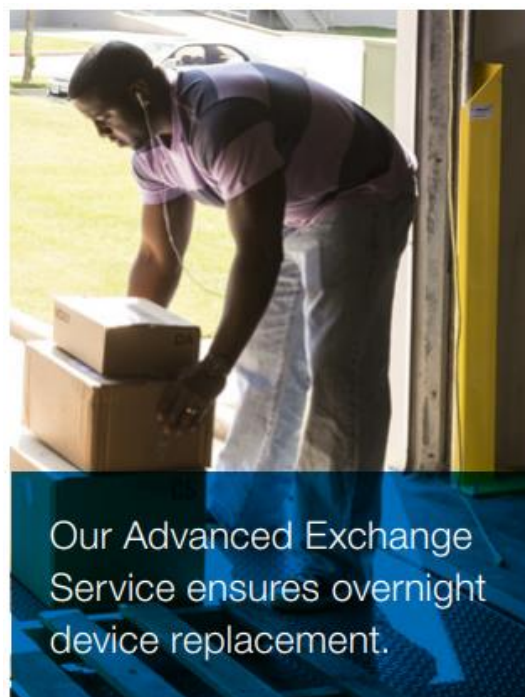
For Best-In-Class Service

Advanced Exchange Service: Your Equipment "On Demand"

For overnight replacement of your Honeywell device, upgrade to our Advanced Exchange Service.

- Customer-owned, Honeywell-managed inventory ready for overnight shipment when you need it.
- Ship the damaged device to us; we'll repair it and add it to your Honeywell managed inventory to replace the device we shipped.

Part Number	Description
SVCCT40-AEFC3	CT40, PLUS, Advanced Exchange, 3 Year, Day 1
SVCCT40-AERC3	CT40, RETAIL, Advance Exchange, Comprehensive Repairs are included but does not include Device Replacement, 3 year



Golden Image

Need the Honeywell Repair Centre to load your software after repair, the Golden Image can be loaded to fast track your devices.

- This is an additional offering which can be added to your Plus and Complete Service.
- Please contact your local Honeywell Representative for more information on this service.

Part Number	Description
SVCMOB-IMAGE3	Golden Image Service - load of customer image on units in repair, Adder to Comprehensive Service, 3 Year Term, 100 unit minimum, Contact Services Sales Manager for Pricing

SVCMOB-IMAGE5	Golden Image Service - load of customer image on units in repair, Adder to Comprehensive Service, 5 Year Term, 100 unit minimum, Contact Services Sales Manager for Pricing
---------------	-----------------------------------------------------------------------------------------------------------------------------------------------------------------------------



Dolphin CT40 Software

CT40 – Device Client Pack

Device Client Pack (DCP) includes first year maintenance. Add additional years of software maintenance for the applications below.

Device Client Pack



Launcher

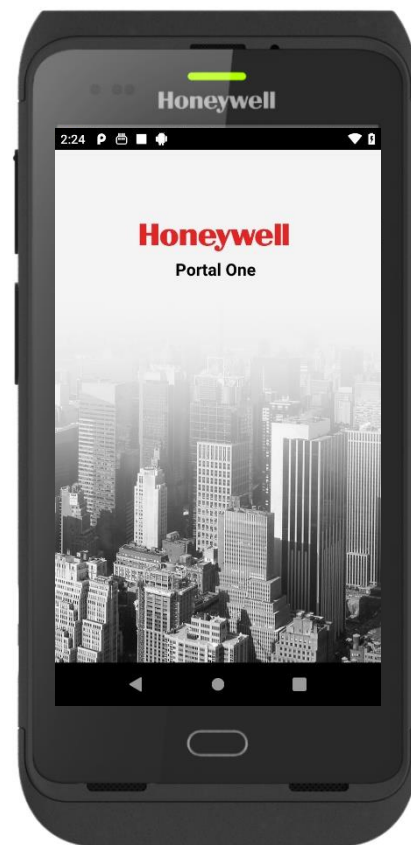


Launcher - gives the customer total control over which apps can be run on the device.

Part#	Description
DCP-001	Device Client Pack License (Launcher & Enterprise Browser)
DCP-SFT1	Device Client Pack - 1 Year Maintenance (Launcher & Enterprise Browser)
DCP-SFT3	Device Client Pack - 3 Year Maintenance (Launcher & Enterprise Browser)



Enterprise Browser



Enterprise Browser provides corporations the ability to run standard web applications from a controlled environment.



SmartTE Terminal Emulator



Terminal Emulator – Full featured SmartTE allows legacy green screen apps to be transformed to the look and feel of native apps. These clients are single session Honeywell TE Licensing. They can also utilize traditional single or multi-session StayLinked Licenses.

Part#	Description
SMARTTE-001	SMARTTE - SINGLE PATH W-1YR MAINT
SMARTTE-SFT3	SMARTTE - 3YR SW MAINTENANCE
SMARTTE-SFT5	SMARTTE - 5YR SW MAINTENANCE

Dolphin CT40 Scanning

Option 1 – Scan Handle

Use for Scan intensive applications



Part Number	Description
1 CT40-SH-DC	CT40 Scan Handle Compatible for use with Home Base and Charge Base without removal.
CT40-HB-0	Home Base
CT40-EB-0	Ethernet Home Base
CT40-DB-0	Display Base
CT40-CB-CNV-0	Quad Charge Base
CT40-NB-CNV-0	Quad Net Base

Not Compatible with the Protection Boot Base
 CT40-CB-PB-0 Protective Boot Quad Charge Base
 CT40-NB-PB-0 Protective Boot Quad Net Base

CT40 with Scan Handle Installed on Home Base

Dolphin CT40 Scanning

Option 2 – Scan Handle with Protective Boot

Use for Scan intensive applications with additional protection of the protective boot.
 This scan handle is ONLY compatible with protective boot quad docks CT40-CB-PB-0 or CT40-NB-PB-0.



Part Number	Description
1 CT40-SH-PB	Kit, CT40 scan handle and includes TPU boot (CT40-PB-00)
2 CT40-CB-PB-0	Protective Boot Chargebase - Kit includes Dock and Power Supply. Compatible with CT40 with TPU boot only
OR CT40-NB-PB-0	Protective Boot Netbase - For Ethernet comms and recharging upto 4 computers. Kit includes Dock and Power Supply. Compatible with CT40 with TPU boot only
3 **	AC Power Cord – See Page 23 for Country Specific Power Cords

Dolphin CT40 Desktop Communications

Option 1 – Portable

USB Communication OR Snap-On Charging



Part Number	Description
1 CT40-SN-USB-0	Snap-on cup with Standard Type A connector.
2 50136024-001	KIT,5V/2A PS,5 PLUGS PACKED, ROW Includes US,UK,AU,EU,IN adapters

Option 2 – Fixed

USB and optional Ethernet Communication & Single Battery Charger



Part Number	Description
1 CT40-HB-0	HomeBase - Kit includes Dock & Power Supply, must order Power Cord separately
OR CT40-EB-0	eHomeBase - Ethernet Kit includes Dock & Power Supply, must order Power Cord separately
2 321-576-004	Cable Assembly - USB Type A to Type B
3 **	AC Power Cord – See Page 23 for Country Specific Power Cords

Dolphin CT40 Desktop Communications

Option 3 – Display Base

Connect USB peripherals (keyboard, mouse) and External Monitor via HDMI



Ethernet USB A HDMI POWER
Rear View

2 x USB Type A on the side
Side View

Part Number	Description
1 CT40-DB-0	For connection with an external display, and extends I/O for HDMI, Ethernet communications and 3 USB ports. Kit includes Display Base, Power Supply, must order Power Cord separately.
2 **	AC Power Cord – See Page 23 for Country Specific Power Cords

Not Compatible with CT40-RB-00 Rubber Boot or CT40-PB-00 Protective Boot

Dolphin CT40 Vehicle Install

Option 1 – Portable/ Sub Contractor Install

Simple Vehicle Charging, portable between vehicles



Part Number	Description
1	CT40-SN-VPA Snap On Adaptor with USB Port
2	CT40-CIGR-0 Accessory Cigarette Lighter Power Adapter with USB Socket

(Provides 12 V/24 V cigarette lighter port to USB type-A power adapter for snap-on use in a vehicle)

Option 2 – Portable/ Sub Contractor Install

Windscreen Suction Cup Mount, portable between vehicles.



Part Number	Description
1	CT40-VD-0 Vehicle Dock w/ hard wired 3-pin power cable
2	RAM-B-166-202U Suction Cup Mount Kit
3	50138169-001 Cigarette Lighter Power Adapter Cable

Dolphin CT40 Vehicle Install

Option 3 – Fixed Vehicle Install with Direct Connection to Vehicle Battery/ Fuse Block

Best used when the vehicle input voltage varies, 12- 24V.



	Part Number	Description
	1	CT40-VD-0 Vehicle Dock w/ hard wired 3-pin power cable
	2	226-109-003 72" (182.88 cm) Fuse block Power Cable with spade lugs and 3-pin connector
	OR	226-109-004 22" (55.8 cm) Fuse block Power Cable with spade lugs and 3-pin connector
	3	805-611-001 Mounting Kit, V-Dock RoHS
Optional	203-803-001	Vehicle Dock Fuse Block Power Kit RoHS (Provides connection to vehicle fuse block). Requires Power Cable (226-109-003 or 226-109-004).

Dolphin CT40 Vehicle Install

Option 4 – Fixed Vehicle Install with DC/DC Converter

Best used when the vehicle input voltage varies, 6-60V or 15-96V.



Part Number	Description
1 CT40-VD-0	Vehicle Dock w/ hard wired 3-pin power cable.
2 203-808-001	DC/DC Converter Kit, <u>6-60V</u> DC, RoHS
OR 203-809-001	DC/DC Converter Kit, <u>15-96V</u> DC RoHS
3 805-611-001	Mounting Kit, V-Dock RoHS

Dolphin CT40 Vehicle Install

Option 5 – Fixed Vehicle Install with Thor DC/DC Converter

Best used when the vehicle input voltage varies, 9-60V or 50-150V.



	Part Number	Description
	1	CT40-VD-0 Vehicle Dock w/ hard wired 3-pin power cable
	2	9000311PWRSPLY DC/DC Converter Kit, <u>9-60V</u> DC, RoHS (Requires 226-109-003 Wiring Harness)
OR		9000313PWRSPLY DC/DC Converter Kit, <u>50-150V</u> DC RoHS (Requires 226-109-003 Wiring Harness)
	226-109-003	72" (182.88 cm) Fuse block Power Cable with spade lugs and 3-pin connector
	3	805-611-001 Mounting Kit, V-Dock RoHS

Dolphin CT40 Vehicle Install

CT40 Vehicle Dock 360 degree view



Front View

Rear View

Side View

Side Profile

Rear Profile

Recommended Screws
8#-32-UNC
(Length = 0.5 inch)

Dolphin CT40 Charging and Communications

Option 1 – CT40 Quad Charger

Chargebase – Quad Dock Charge Only
 Netbase – Quad Dock with Ethernet

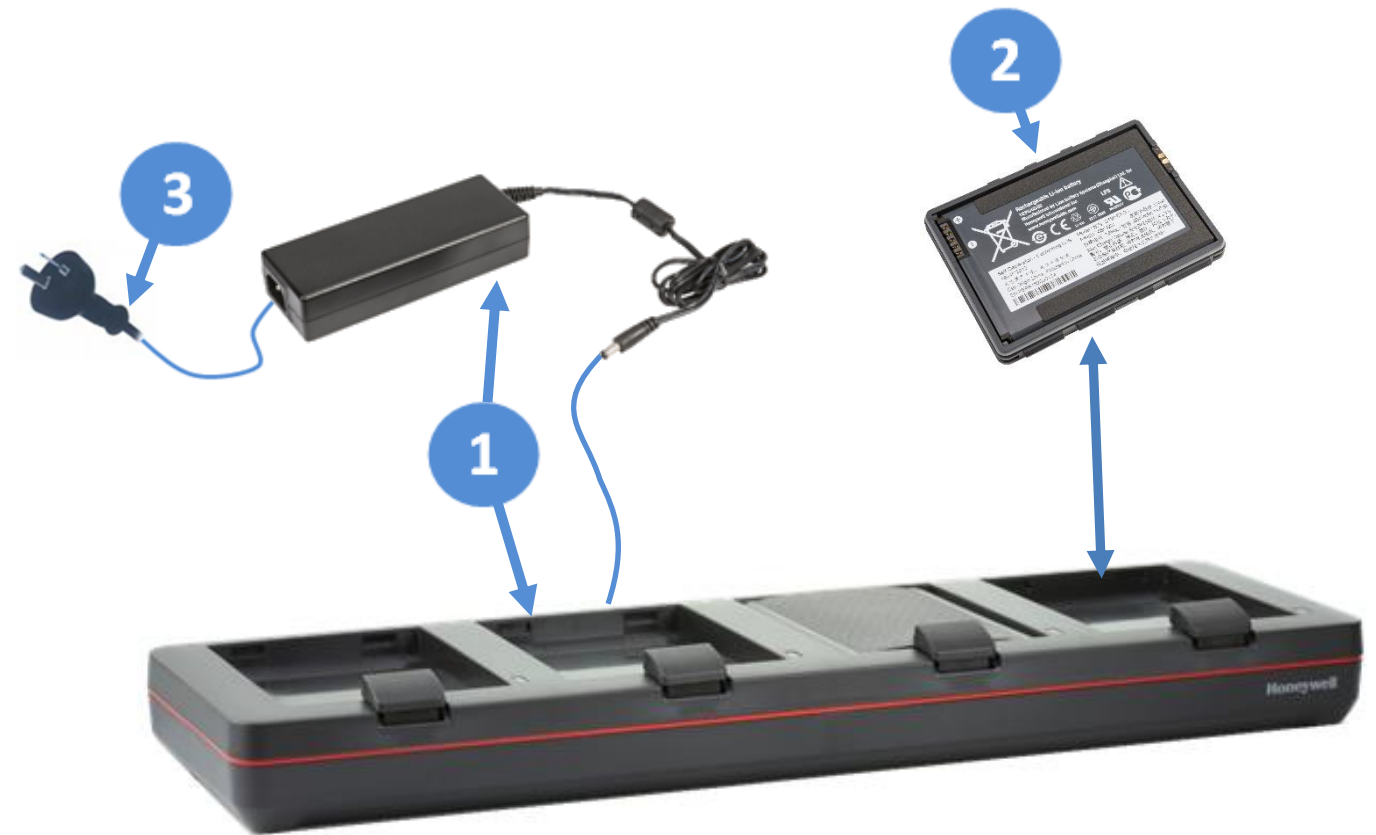


Part Number	Description
1 CT40-CB-CNV-0	Chargebase - Kit includes Dock and Power Supply
OR CT40-NB-CNV-0	Netbase - For Ethernet comms and recharging upto 4 computers.
2 **	AC Power Cord – See Page 23 for Country Specific Power Cords

Not Compatible with CT40-RB-00 Rubber Boot or CT40-PB-00 Protective Boot

Option 2 – Battery Charger

Charge up to 4 batteries simultaneously



Part Number	Description
1 CT40-QBC-0	Quad Battery Charger - Kit includes Dock and Power Supply
2 318-055-010	Gen 1 Replacement Battery for CT40, 4,090mAh
OR 318-055-014	Gen 2 Replacement Battery for CT40, 4,090mAh
3 **	AC Power Cord – See Page 23 for Country Specific Power Cords

Dolphin CT40 Protective Boot

Option 1 – Rubber Boot

Use for added protection of the CT40



Part Number	Description
1 CT40-RB-00	CT40 Rubber Boot
Not Compatible with	
Scan Handles / Home Base / Charge Base Docks / Vehicle Dock	

Option 2 – Dockable Protective Boot

Use when protective boot is required with or without scan handle and dockable.

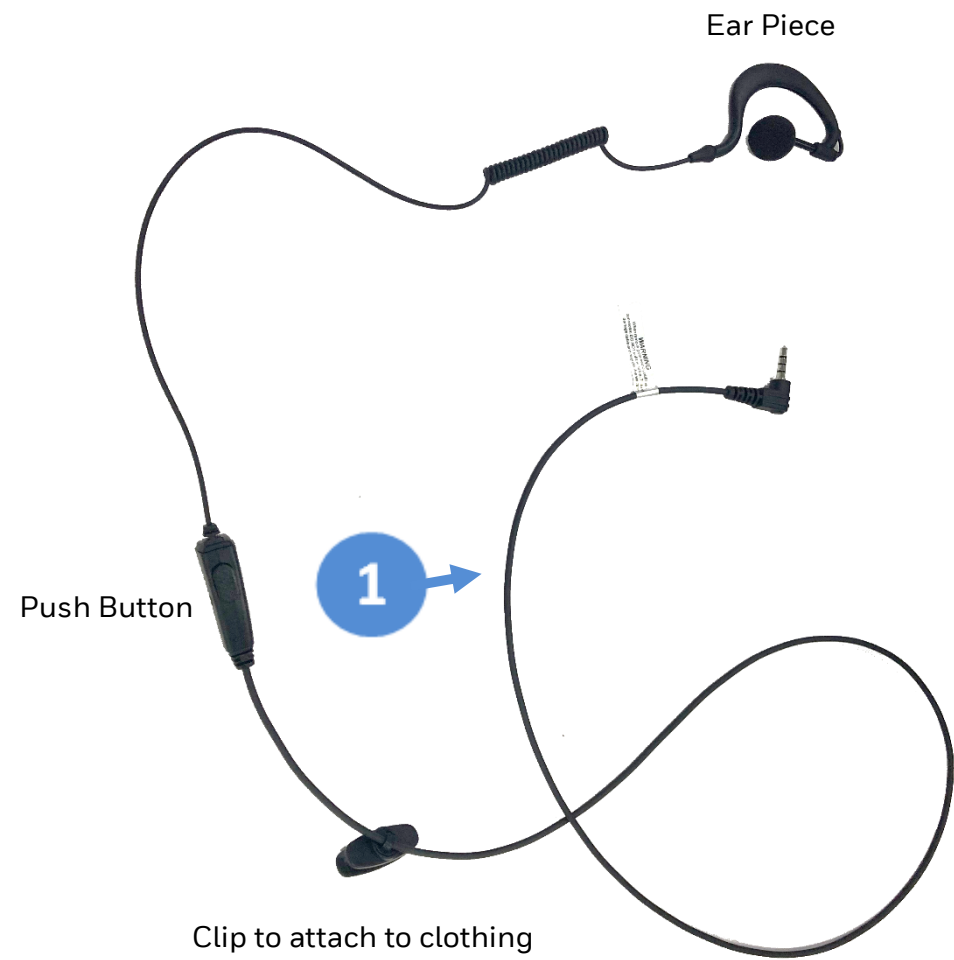


Part Number	Description
1 CT40-PB-00	CT40 TPU boot
2 CT40-CB-PB-0	Protective Boot Chargebase - Kit includes Dock and Power Supply.
OR	
CT40-NB-PB-0	Protective Boot Netbase - For Ethernet comms and recharging upto 4 computers. Kit includes Dock and Power Supply. Compatible with CT40 with TPU boot only
3 **	AC Power Cord – See Page 23 for Country Specific Power Cords

Dolphin CT40 Headset

CT40 Push To Talk (PTT) and VoIP Headset

PTT and VoIP ready to support In-Store Communication with leading 3rd party applications.



3.5mm Audio Jack
(WiFi Models Only CT40-L0N-xxxxxAx)



2.5mm Adapter Cable

	Part Number	Description
	1	CT40-HDST-35MM CT40 Headset with PTT, 3.5mm audio jack
Optional	2	CT40-CVT-25MM 3.5mm plug to 2.5mm Socket Adaptor Cable (for attaching 3 rd party 2.5mm headsets)

Dolphin CT40 RFID

IH21 RFID Reader for CT40

Connect the IH21 to the CT40 via Bluetooth



IH21 Charging Cradle

	Part Number	Region	Description	
	1	IH21A0020	AUS	IH21 Bluetooth RFID Reader with e-Pop-Loq, UHF Antenna, Trigger Handle, Battery, Battery Cover, no imager, red and black. AU
	OR	IH21A0014	FCC	IH21 Bluetooth RFID Reader with e-Pop-Loq, UHF Antenna, Trigger Handle, Battery, Battery Cover, no imager, red and black.FCC
	OR	IH21A0002	ETSI	IH21 Bluetooth RFID Reader with e-Pop-Loq, UHF Antenna, Trigger Handle, Battery, Battery Cover, no imager, red and black.ETSI
	2	IH21-EPL-CT40		Cover,ePop-Loq CT40, IH21
	3	IH21-CB-1		IH21 Docking Cradle with World traveler PSU and Mini USB Lead, red and black
Optional		IH21-QBC-1		4-Slot Battery Charger. Order power supply 851-812-001 & Power Cord separately
Optional		851-812-001		AC ADAPTER,12V/60W,2.5X5.5MM,LEVEL VI. Order AC Power Cord – See Page 23 for Country Specific Power Cords
Optional		318-060-001		Spare Battery for IH21 RFID reader

Honeywell Repair Services

SVCIH21-5FC3 IH21, PLUS, 5 Day Turnaround, 3 Year, Day One

Miscellaneous

CT40 Accessories



Part Number	Description
CT40-HS-3PK	CT40 Hand strap, pack of 3



Part Number	Description
CT40-SP-10PK	Contains 10 self-adhesive screen protectors



Part Number	Description
50121666-001	Power Adapter,12V 3A, No Power Cord, Compatible with CT40 Homebase / eHomebase / Quad Battery Charger



Part Number	Description
213-048-001	Pack of 5 CT40/CT50/CT60 replacement styluses.



Part Number	Description
8754-871600-20	Pack of 10 CT40/CT50/CT60 replacement Styluses.



Part Number	Description
50121667-001	Power Adapter,12V 7A, No Power Cord 4-Bay Charge Base Power Supply CT40 Quad Chargebase/ Quad Netbase

Miscellaneous

CT40 Accessories



Part Number

Description

CT50-CC-12

CHARGING CABINET FOR CT40/CT50/CT60 with space to house 12 Computers and 12 Spare Batteries. Quad battery chargers (CT40-QBC-0) and Quad ChargeBase (CT40-CB-0) or NetBase (CT40-NB-0) must be ordered separately.

Part Number

Description

CT40-QL-00

CT40 Quad Lock Case Mount CT40 to 3rd party RFID readers



Front



Rear



Part Number

Description

825-237-001

POUCH, CT40/CT50/CT60



Part Number

Description

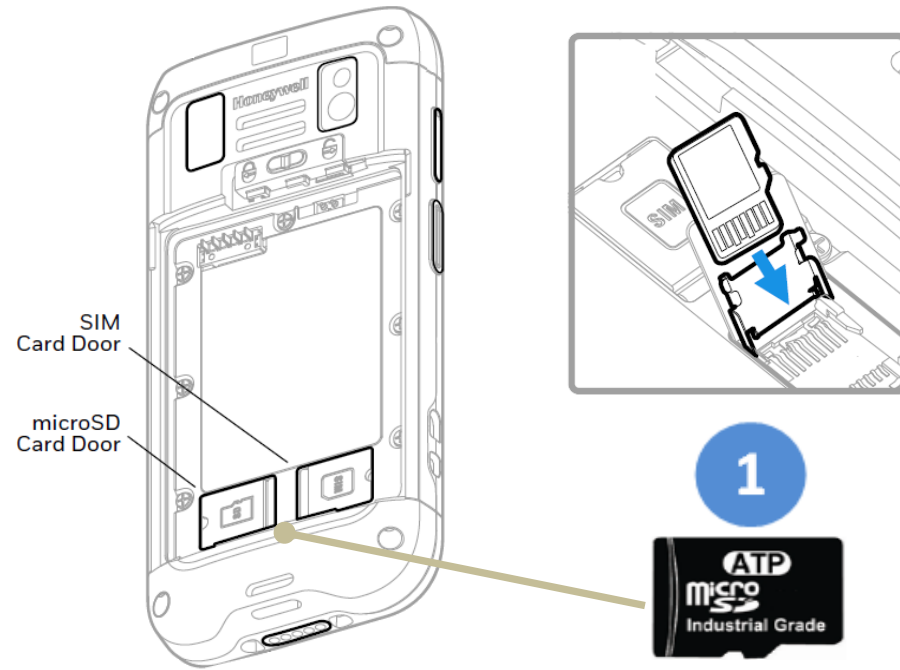
825-238-001

CT40/ CT50/CT60 Holster



Miscellaneous

Honeywell Recommended – ATP Industrial Grade Micro SD Cards



Part Number	Description
1 856-065-004	MICRO-SD CARD, <u>1GB</u> , AF1GUDI, ROHS
OR 856-065-005	MICRO-SD CARD, <u>2GB</u> , AF2GUDI, ROHS
OR 856-065-006	MICRO-SD CARD, <u>4GB</u> , AF4GUDI, ROHS
OR 856-065-007	MICRO-SD CARD, <u>8GB</u> , AF8GUDI, RoHS

Why ATP Industrial Grade SD?

ATP's SIP (System-In-Packaging) manufacturing process encapsulates all exposed components and points of failure to ensure the products are fully waterproof, shockproof, and ESD (Electro-Static Discharge) proof. ATP Industrial Grade SD/SDHC Cards can withstand at least an operating/storage temperature range of at least -40 to 85 degrees Celsius. In addition to this temperature range, the cards are completely waterproof, dustproof, and ESD (Electro-Static Discharge) proof. All ATP Industrial Grade SD/SDHC cards are produced under a stringent RoHS and Green Package compliant manufacturing process to guarantee a consistent high level of build quality and performance. ATP Industrial SD cards deliver outstanding performance with read speed (seq) up to 18MB/sec and write speed (seq) up to 16MB/sec. All ATP Industrial Grade CF, SD, USB drives, and SSDs are constructed using best-in-class SLC(Single-Level Cell) components with enhanced Error Correction Code(ECC) functions and wear levelling algorithms. This results in MTBF ratings over 2 million hours and the highest write cycle lifetimes in the industry.

AC Cords

Part Number	Description
50117501-001	AC Power Cord, Australia
19-19807	AC Power Cord, China
9000091CABLE	AC Power Cord, Denmark
77900508E	AC Power Cord, Europe
50127245-001	AC Power Cord, India
9000092CABLE	AC Power Cord, Italy
321-500-002	AC Power Cord, Japan
9000093CABLE	AC Power Cord, Switzerland
77900507E	AC Power Cord, United Kingdom
19-19726	AC Power Cord, United States

Disclaimer

Honeywell International Inc. (“HII”) reserves the right to make changes in specification and other information contained in this document without prior notice, and the reader should in all cases consult HII to determine whether any such changes have been made. The information in this publication does not represent a commitment on the part of HII.

HII shall not be liable for technical or editorial errors or omissions contained herein; nor for incidental or consequential damages resulting the furnishing, performance, or use of this material.

This document contains proprietary information that is protected by copyright. All rights are reserved. No part of this document may be photocopied, reproduced, or translated into another language with-out prior written consent of HII.

Web Address: www.honeywellaidc.com

The Bluetooth trademarks are owned by Bluetooth SIG, Inc., U.S.A and licensed to Honeywell.

Other product names mentioned in the manual may be trademarks of registered trademarks of their respective companies and are the property of their respective owners.

© 2019 Honeywell International Inc. All rights reserved.